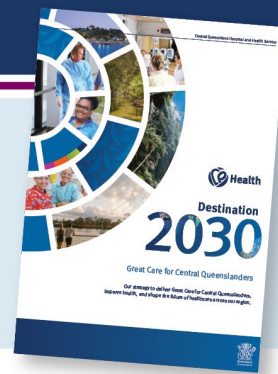


## Environmental Health Officer

**Our Destination 2030:** Great Care for Central Queenslanders strategy will shape the future of healthcare across our region, and support our aim for Central Queenslanders to be amongst the healthiest in the world. Great staff working in great teams with a culture of supporting and investing in our people's future. Find out more visit online

[www.health.qld.gov.au/cq/destination-2030](http://www.health.qld.gov.au/cq/destination-2030)

*Great People, Great Place to Work*



### Role Details

|                         |                                       |                       |                               |
|-------------------------|---------------------------------------|-----------------------|-------------------------------|
| <b>Role Title</b>       | Environmental Health Officer          | <b>Classification</b> | HP3                           |
| <b>Status</b>           | Permanent Full Time                   | <b>Salary</b>         | \$43.68 - \$58.59 p.h.        |
| <b>Unit/Facility</b>    | Central Queensland Public Health Unit | <b>Total Package</b>  | Up to \$132,567 p.a.          |
| <b>Location</b>         | Rockhampton                           | <b>Contact</b>        | Peter McKee<br>(07) 4920 6884 |
| <b>Job Ad Reference</b> | RK5G647612                            | <b>Closing Date</b>   | Monday, 21 July 2025          |

\*Please note: there may be a requirement to work at other facilities located across Central Queensland Hospital and Health Service

### Public Health Unit

Central Queensland Public Health Unit provides services to both the Central Queensland and Central West regions. Our team includes epidemiologists, public health medical officer, public health nurses, environmental health officers, public health data officer and business support staff.

Public health units focus on:

- Protecting health.
- Preventing disease, illness and injury.
- Promoting health and wellbeing at a population or whole of community level.

### The Opportunity

Deliver complex regulatory and non-regulatory environmental health services across Central Queensland Hospital and Health Service (CQHHS) to protect, promote and prevent risks to the community arising from environmental health hazards that impact on the natural and built environment and human health.

CQ Health  
Living our values

#### Care

We are attentive to individual needs and circumstance

#### Integrity

We are consistently true, act diligently and lead by example

#### Respect

We will behave with courtesy, dignity and fairness in all we do

#### Commitment

We will always do the best we can all of the time

## Total Package

- 12.75% employer superannuation contribution
- Annual leave loading 17.5%
- Salary packaging
- Work/life balance, variety, and flexibility
- Employee Assistance Program

## The Role

- Demonstrate expertise, skill and knowledge, commensurate with the level of experience, to undertake routine environmental health services and incident response, implement projects and research, under the supervision and professional guidance of a more senior environmental health officer.
- Develop ability to use evidence-based practice to investigate, enforce and prosecute in a court of law, relevant health legislation, in compliance with departmental policies and procedures and in line with contemporary investigatory practice, under the supervision of a more senior environmental health officer.
- Provide competent environmental health advice to internal and external stakeholders and prepare routine reports and submissions on environmental health issues to a more senior Environmental Health Officer, commensurate with the level of experience.
- Work within a team of environmental health officers in the delivery of environmental health services and within a multi-disciplinary team in response to outbreaks and incidents to address specific public health issues.
- Commensurate with level of experience, provide guidance to less experienced staff and work experience students, in relation to routine procedures and practices, under the supervision of a more senior environmental health officer.
- Use knowledge obtained through tertiary education, professional development and experience, to inform and improve environmental health practice.
- Engage in continual learning and development of environmental health practice knowledge and expertise through active learning within the team and by engaging in ongoing, relevant professional development activities.

## Mandatory Qualifications / Professional Registration / Other Requirements

- **Mandatory qualification/s:** Appointment to this position requires a tertiary qualification accredited by Environmental Health Australia, and which is acceptable by the Chief Executive Queensland Health.
- **Non-mandatory qualifications/requirements:** Experience in environmental health will be highly regarded.
- **Proof of identity documents:** Candidates must provide certified copies of requested proof of identity documents for the purposes of General Criminal History and National Police Certificate checks.
- **Proof of qualification:** Appointment to this position requires proof of qualification and if applicable registration or membership with the appropriate registration authority or association. Certified copies of the required information must be provided to the appropriate supervisor/manager, prior to the commencement of clinical duties.
- **Disclosure of Serious Disciplinary History:** Under the [Public Sector Act 2022](#), applicants are required to disclose any previous serious disciplinary action taken against them.
- **Licence to operate vehicle:** This position requires the incumbent to operate a class C motor vehicle and an appropriate licence endorsement to operate this vehicle is required. Proof of this endorsement must be provided prior to the commencement of duty.
- **Travel:** Travel throughout the health service may be required as part of this position.

- **Vaccine Preventable Diseases:** It is a condition of employment for this role for the employee to be, and remain, vaccinated against the following vaccine preventable diseases during their employment

[Health Employment Directive No. 01/16:](#)

- Measles, Mumps, Rubella (MMR)
- Varicella (chicken pox)
- Pertussis (whooping cough)
- Hepatitis B
- All new employees who will be working in clinical areas must be assessed for their risk of tuberculosis and screening undertaken if required.

Further vaccinations may be required due to risks for a role; examples include:

- Hepatitis A – Workers in regular contact with untreated sewerage
- Q Fever – Research or Laboratory staff regularly handling specimens
- Influenza

## How you will be Assessed

You will be assessed on your ability to demonstrate the best fit for the role. Within the context of the responsibilities described under 'The Role', the ideal applicant will be someone who can demonstrate the following:

- Demonstrated base level of knowledge, expertise and skill to deliver routine environmental health services.
- Demonstrated ability or ability to rapidly acquire knowledge and expertise in the interpretation and enforcement of environmental health legislation and relevant state, national and international standards used in connection with environmental health.
- Ability to contribute to the management of environmental health projects/programs.
- Demonstrated ability to provide competent clinical advice on environmental health matters and ability to participate in a single-discipline or multidisciplinary team.
- Demonstrated written and interpersonal communication skills, including the ability to be an effective team member.
- Demonstrated ability to self-manage work activities and impart professional knowledge to environmental health colleagues.
- Demonstrated commitment to continually developing environmental health practice knowledge and expertise.