



Strategic Plan 2016-20

Vision

Environmental Health Australia aspires **to enhance the practice of Environmental Health** to provide a healthy, safe and attractive natural, built and social environment for all of the communities of Australia.

Mission Statement

Environmental Health Australia is the premier environmental health professional organisation in Australia.

Environmental Health Australia will continue to develop and maintain a quality environmental health workforce and advocate for enhanced environmental health standards for, and on behalf, of all the communities of Australia.

Corporate Goals

- develop the EHO workforce and enhance the professional standing of environmental health practitioners;
- continuously improve governance practices to ensure the organization is able to represent its members and enhance environmental health;
- advocate for improving environmental health standards in the Australian community.

These goals will be achieved through the following three broad **strategies**:

- Organisational - the continual improvement of organisational capacity focused on improving sustainability and resources.
- Professional practice - the enhancement of professional environmental health practice through development of standards of practice, professional development and certification/accreditation schemes.
- Environmental health advocacy - the enhancement of environmental health advocacy through the development of environmental health policy positions, policy networks and relationships, and advocacy mechanisms.

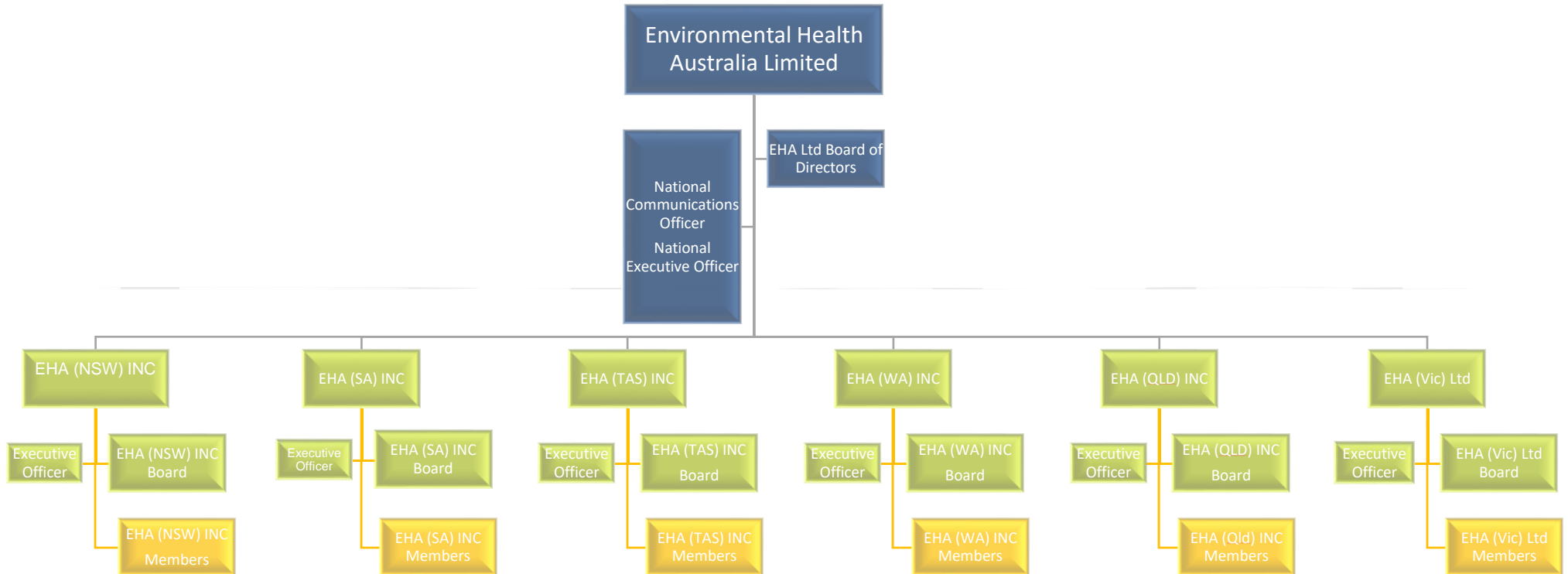
Organisational Values & Behaviours

EHA is committed to ensuring that all our activities are undertaken consistent with the objects of the Constitution and with the following values:

- Professionalism: we perform our tasks and derive outcomes to the best of our ability, with optimum use of resources and with a focus on continuous improvement, productivity and professional development;

- Integrity and Ethics: we deal with each other, our members and stakeholders on the basis of trust, understanding and respect for differing views and interests. We find solutions that best reconcile diverse interests and provide optimum value to our members and stakeholders in the interests of enhancing environmental health;
- Transparency: we are open and honest in our dealings with each other, members and stakeholders;
- Accountability: we serve the needs of our members in a professional, responsible and accountable manner;
- Responsiveness: we engage with our members and stakeholders to enable members and stakeholders to participate in policy development and decision making processes; and
- Sustainability and Stewardship: we acknowledge our responsibility for resources, the environment and ensuring our natural resources are sustainably managed for our own quality of life, and for future generations.

Organisational Structure



Strategy 1

Organisational - the continual improvement of organisational capacity focused on improving sustainability and resources

1.0	Key Result Area – Organisational Capacity	Who	When	Action Plan	Measure
1.1	Member Association agreements;	Board	November - Annually	Current	Signed Agreements
1.2	Annual budget preparation in consultation with Association Members;	NT/Board	Annually	N/A	Budget Adoption
1.3	IT system upgrades and/or replacement for Associations and the National Office;	NEO/Board	2016-17	Current	Action Plan Progress
1.4	Review governance policies including membership, internal procedures and committees;	NEO	2016-17	Current	Action Plan Progress
1.5	Board & Company professional development (e.g. Board Directors Course, Meeting Procedure & Media training);	NEO/Board	2016-20	TBD	TBD
1.6	Template Business Plan for Members – including Strategic Direction, Budgeting, Governance, Projects and Programmes Media and Communication;	Board	2018-20	TBD	TBD
1.7	EHA Ltd commercial entity and assist devolution to Member Associations;	Board/NEO	2018-20	TBD	TBD
1.8	Organisational marketing plan;	Board	2016-17	Current	Action Plan Progress

	Key Result Area	Who	When	Action Plan	Measure
1.9	Research capacity in collaboration with the tertiary sector;	Board	2017-20	TBD	TBD
1.10	Web-based peer review journal.	NP/VP	2017-19	TBD	TBD
1.11	Establish Registered Training Organisation	Board	2016-18	Current	RTO approval

Strategy 2

Professional practice - the enhancement of professional environmental health practice through development of standards of practice, professional development and certification/accreditation schemes.

2.0	Key Result Area – Professional Practice	Who	When	Action Plan	Measure
2.1	Continuing Professional Development (C.P.D.) programme;	NEO/EO's	2016-20	N/A	Participation Rate
2.2	Environmental Health Certification schemes (CEHP/CEHT);	Board	2016-18	Current	Action Plan Progress
2.3	National University EH course Accreditation Programme;	VP	2016-17	Current	No. Currently Accredited Courses
2.4	National Training Program and Courses for Association Members;	Board	2018-20	TBD	TBD
2.5	Develop reciprocity arrangements with IFEH members;	NP	2016-20	TBD	TBD
2.6	Conference & Seminars Timetable;	NEO/EO's	2016-20	N/A	Calendar Current
2.7	National Annual Awards System;	Board Associations	2016-20	N/A	Annual Awards

Strategy 3

The enhancement of environmental health advocacy through the development of environmental health policy positions, policy networks and relationships, and advocacy mechanisms.

1.0	Key Result Area – Advocacy	Who	When	Action Plan	Measure
3.1	Develop policy positions on environmental health issue	Board	2016-20	Current	Policy Positions per year
3.2	Communication Strategy for the National Company and Member Associations;	Board/NEO	2016-18	Current	Action Plan Progress
3.3	National Membership expansion through Associate Membership and Consultancy & Contractor Database;	Board	2016-20	N/A	No. Associates & Subscriptions
3.4	Expand Policy networks and advocacy relationships;	NP	2016-20	N/A	No. of Orgs

Abbreviation Definitions

Associations – Member Associations
 Board – National Board of Environmental Health Australia Ltd
 Exec – Executive Committee of EHA Ltd
 NEO – National Executive Officer and Company Secretary
 NP – Board National President
 NT – Board National Treasurer
 TBD – To be determined
 VP – Board Vice President
 N/A - Not Applicable
 EO – Executive Officers of Member Associations